

МАСШТАБ: МИКРО

Здания:

ул. Чумбарова-Лучинского, 38
(бывшее здание Коммерческого собрания)

ул. Чумбарова-Лучинского, 44
(бывший дом С. Я. Тимофеева)

SCALE: MICRO

Buildings:

Chumabrova-Luchinskogo, 38
(former House of Commerce)

Chumabrova-Luchinskogo, 44
(former Timofeev's residence)

ул. Чумбарова-Лучинского, 38
(бывший дом Коммерческого собрания)

Chumabrova-Luchinskogo, 38
(former House of Commerce)



ул. Чумбарова-Лучинского, 38

Chumabrova-Luchinskogo, 38

Дом коммерческого собрания



MICRO / SWOT analysis

Strengths

- Location Good transport accessibility, the historical center, Zapovednaya street, high traffic, proximity to mass events.
- Importance. Cultural center, place of power, existing activity.
- The museum.
- Variative building plan. Many different spaces.
- Condition. The house is operated, in good condition, serviceable communications.
- Building look. Extraordinary, eye-catching.
- Link to industrialists and business community. Historical context, interest from modern business people.
- Activity. School of companions
- Personality. Martha is a famous person who preserves the heritage.
- Partnerships. Good relations with tourist and retail company "Titan".
- Theme. The museum owns the theme of wood.
- The house binds sociality and wood.
- House - Tree - Forest. The museum connects the city, the village and the forest.
- Financing. The museum has sustained federal funding.

Commercial Assembly building

Weakness

- Insufficient number of staff to expand activities.
- Confusion with the name. Marfa's House - Commercial Assembly building - "Malye Korely." The house is 160 years old, and Martha has been working in it for only 10 years, but now tpeople remembers only her.
- The house requires expensive maintenance. Incorrect heat engineering.
- The complex structure of rooms that are difficult to isolate. Restrictions on combining functionality.
- Bad reputation. Townspeople remember the fur coats fair in this house.
- Program. The house activity falls between the museum and the social center.
- Property. The house does not quite belong to the museum. But federal property - a lot of coordination and control.
- Lack of advertising, lack of navigation.
- Environment. The adjacent territory is not mastered.
- Entrance from the side.
- Communication with the museum. The house is not associated with "Malye Korely".
- Lack of parking.

MICRO / SWOT analysis

Opportunities

- International projects. The current international project of exchange of experience in the field of handicrafts and wooden architecture. Implemented project "Craft without Borders"
- Experience. The museum has a great experience in working with wood, works with artisans and craftsmen, arranges fairs.
- Professional community. The museum cooperates with the engineering school, is a base for research, has an agreement with NArFU.
- Stories. There are many untold stories about the inhabitants of the wooden home: commerce, wood, figures, people, village, city.
- International volunteers. A promising area of work.
- Federal program for the development of volunteering.
- Activists (most importantly, Tom Sawyer). The museum can work more actively with them, they have an interest.
- Tourism. The museum attracts many tourists to participate in federal programs.

Commercial Assembly building

Threats

- Politics. Possible change of priorities of cultural policy.
- Sound pollution of the area around the house.
- Inconsistency of the cultural policy of museums in the city, which creates unnecessary competition. The lack of a discussion platform.
- Incomprehensible situation with the construction of the church across the road.

MICRO / Proposals

Resource center movement for the preservation of wooden architecture.

What is:

Place - the building does not require changes, activists, interest, specialists

What is not:

Organizations with which you could enter into a partnership, special funding

Possible projects:

- Attracting a federal grant for a volunteer project
- Expeditions, workshops, master classes
- Using the house as an object of wooden architecture - thematization of the restoration process, designs.
- Walking, excursions, immersive performances - emphasis on performativity
- Playground-house in a pool. The involvement of adults through children.

Tree Creative Industry Centre

Event activity based on existing projects

Commercial Assembly 2.0

Understandable programs to develop interaction with corporate partners.

Commercial Assembly building

Дом Тимофеева

ул. Чумбарова-Лучинского, 44
(бывший дом С. Я. Тимофеева)

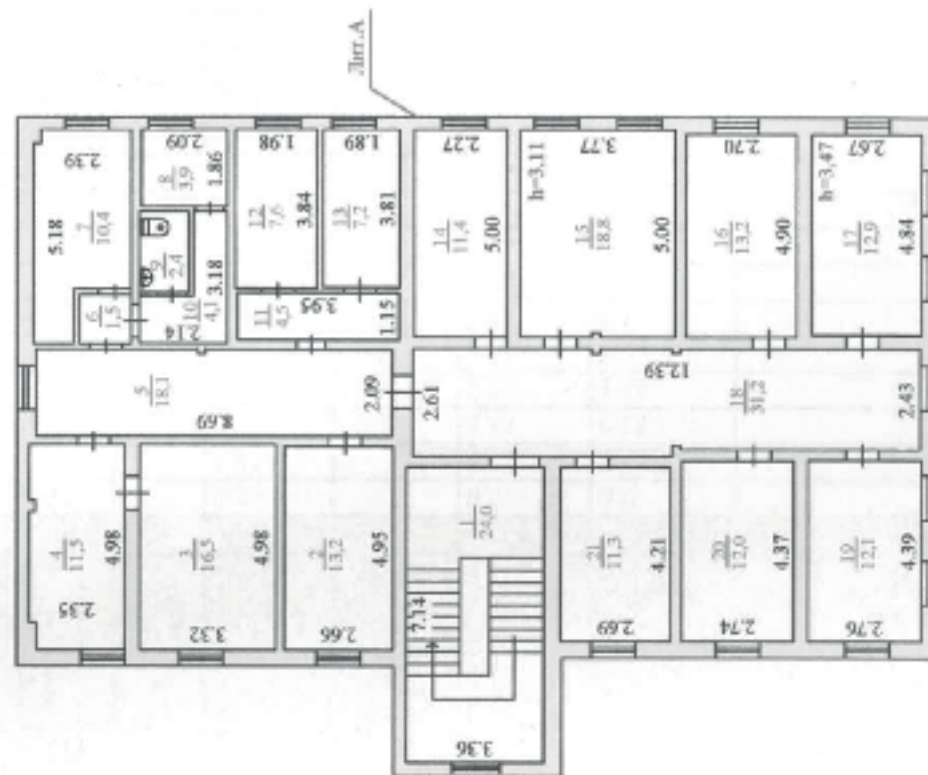
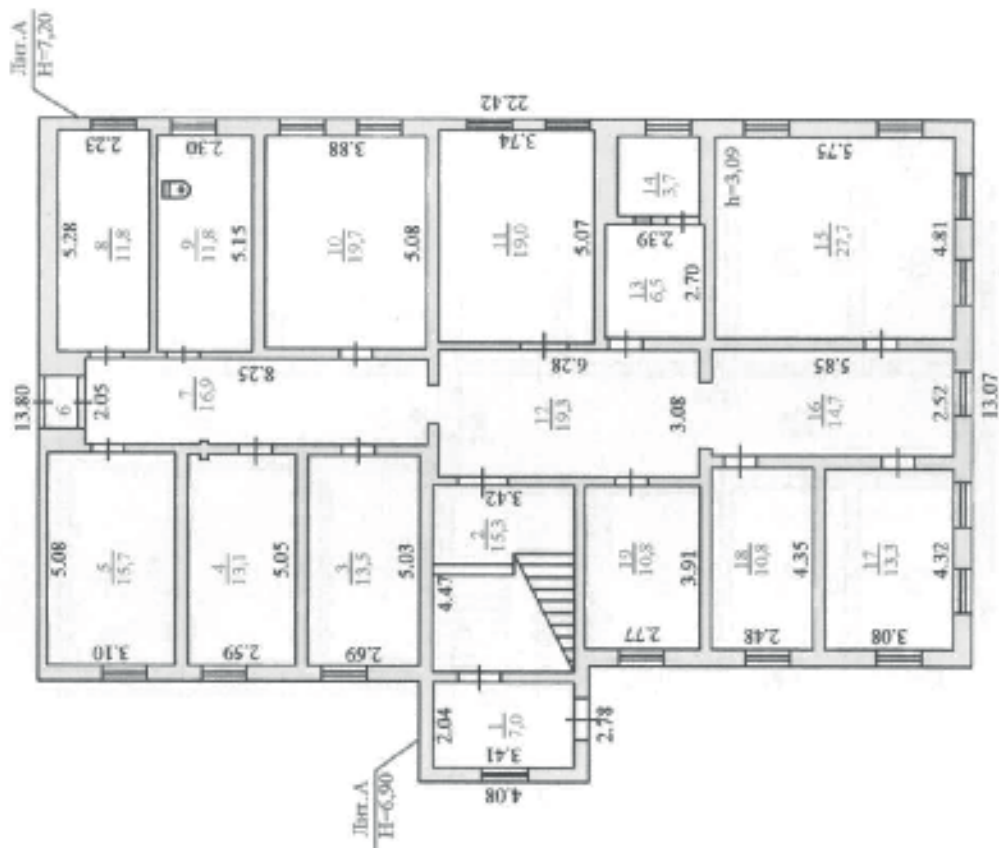
Chumabrova-Luchinskogo, 44
(former Timofeev's residence)



Дом Тимофеева

ул. Чумбарова-Лучинского, 38
(бывший дом С. Я. Тимофеева)

Chumabrova-Luchinskogo, 38
(former Timofeev's residence)



MICRO / SWOT analysis

Timofeev's House

Strengths

- Central location in the city, active tourist location
- Unusual architraves on the windows (1984)
- The original historical location of the building and constructive

Weakness

- The poor condition of the building (basement, etc.)
- The legal issue has not been resolved yet (the transfer of the building from the Department of Internal Affairs to the mun. Property has not yet been fulfilled)
- Bad soundproofing der. bulkheads
- Weak historical knowledge
- Difficulty in locating social functions (lecture, exhibition, etc.) due to the low height of the ceilings and the lack of two-light rooms

- The building is not a monument: you can do redevelopment, etc.
- It is possible to place several different functions (thanks to corridor layout)

- The building is not a monument: not protected from demolition and restructuring by the state
- There are plans to demolish the building

Opportunities

Threats

MICRO / Proposals

Timofeev's House

- Creative industry workshops open to tourists. Perhaps with the format of life + work.
- Residents of artists / artisans (also in connection with the regional school of folk art, located nearby)
- Supervised local trade fair (small shops selling well-designed local products)
- Hostel / hotel (question on occupancy)
- Independent exhibition area (redevelopment needed)

* in all variants of functions, the possibility of communication with all city events taking place on ul. Chumbarova-Luchinsky

МАСШТАБ: МАКРО





Объекты деревянной архитектуры центральной части г. Архангельска

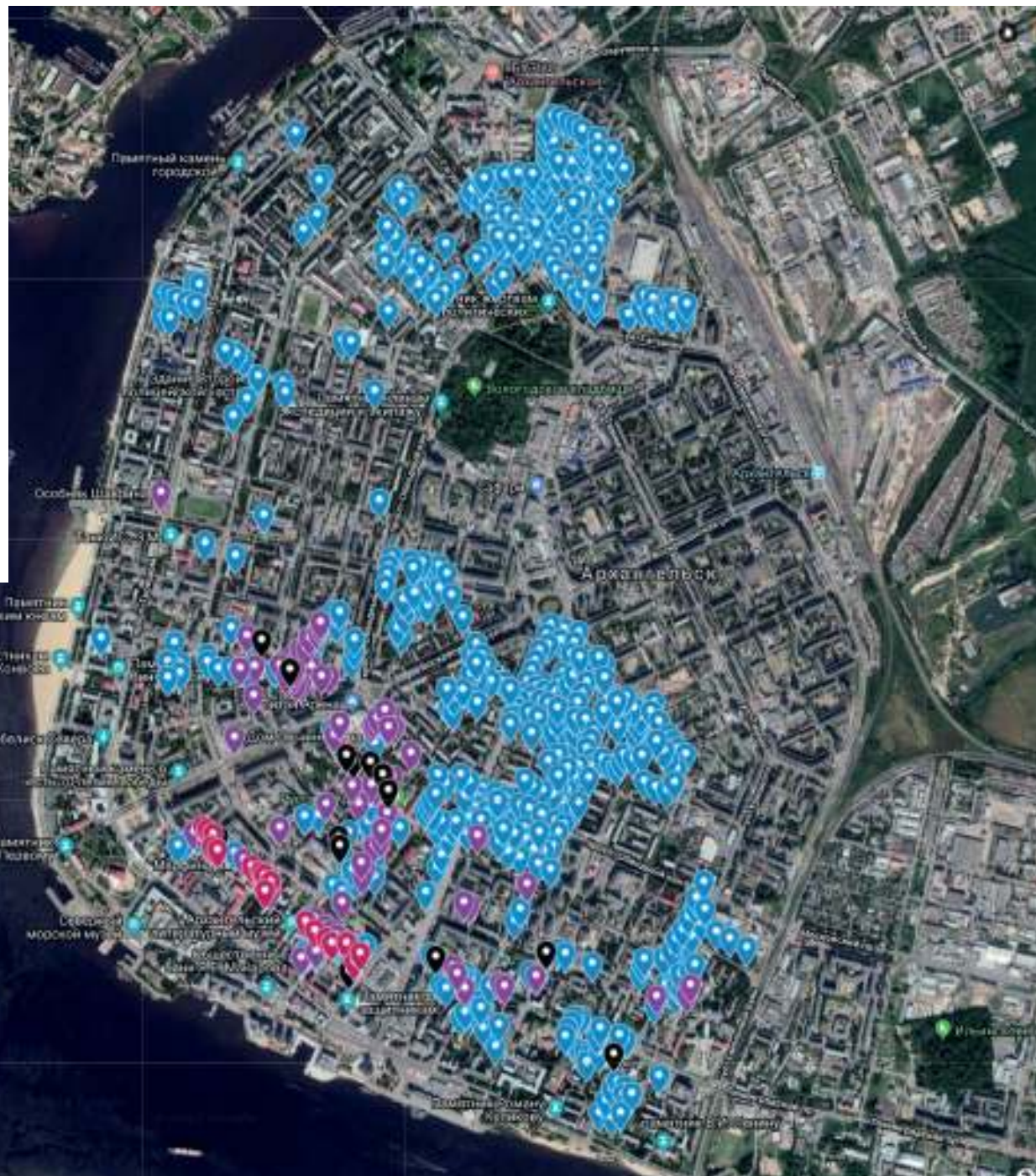
SCALE: MACRO

Wooden buildings located in the central part of Archangelsk

Объекты деревянной архитектуры центральной части г. Архангельска

Wooden buildings located in the central part of Archangelsk

-  Здания периода постройки 1918-1991 гг.
Buildings constructed in 1918-1991
-  Здания периода постройки до 1917 г.
Buildings constructed before 1917
-  Заброшенные неэксплуатируемые здания
Abandoned disused buildings
-  Копии исторических зданий,
расположенные на ул. Чумбарова-Лучинского
Historical buildings «copies»
located on Chumbarova-Luchinskogo street



MACRO / SWOT analysis

Wooden architecture in Arkhangelsk

Strengths

- Varied interesting architecture of prewar wooden buildings;
- Entire blocks of wooden buildings (mostly post-war buildings) have been preserved;
- Historical significance
- Quality environmental characteristics and quality of perception by residents;
- Community residents wooden houses that jointly protect them from arson, etc.
- The tree in the city is even found as elements of panel and brick buildings;
- The tree is positively perceived by citizens

Weakness

- The perception of wooden architecture is associated with “marginal specificity” (social danger);
- Wooden houses are perceived by residents not as a value, but as a problem;
- Bad thermal insulation of Soviet-built houses (timber with cross-section. 200mm)
- The poor condition of the whole wooden stock;
- Many homes have problems with piles due to waterlogging and lowering of the groundwater level;
- In many houses there are no utilities, except electricity;

- Creation of low-rise cottage villages in the suburbs (massif, timber, etc.)
- Tourist potential
- Wood - relevant material
 - international grants,
 - federal programs

- Replacement of wooden buildings with more high-rise (brick and panel) more profitable for developers;
- Bad operation;
- Arsons by developers for resettlement and development
- The administration of the city and the region does not perceive the value of wooden architecture, does not allocate budgets for repair, restoration and preservation;
- Lack of specialists in restoration, archival work, carpenters, etc. Lack of specialized educational and scientific institutions;
- Low level of woodworking and processing industry in the Arkhangelsk region.

Opportunities

Threats

MACRO / Proposals

- Creating a registry of wooden architecture “Encyclopedia of wooden city”;
- Regional and municipal architecture maintenance programs;
- Changes in the General Plan and the rules of land use and development;
- Typical methods of inspection and repair available to non-specialists;
- Formation of the department of restoration in NArFU (now, quality education, specialists in industrial-civil construction). Center wooden architecture at the School of Engineering NArFU;
- Formation of a scientific school on the basis of the Malye Karely;
- PPP-based building restoration: building up communications, restoration by volunteers (for an apartment, like in Stockholm)
- Museification by organizations (NArFU, etc.)

Wooden architecture in Arkhangelsk